

a Termoli

€ 170.000

Ref. F03-1



83 sq.m | : 2 | : 2 | : 3

Apartment with Garden for Sale in Termoli - Via Padre Pio.

Imagine moving into your new home and not having to think about a thing, because everything is ready to move into. This 83 m2 ground floor apartment with a garden on Via Padre Pio is newly built with modern taste, quality materials, and a great attention to comfort.

As soon as you walk through the door, you'll be greeted by a bright and spacious living area, with an open-plan living room and kitchen overlooking the private garden of over 35 square meters-perfect for relaxing outdoors, hosting dinners with friends, or simply enjoying some tranquility.

The sleeping area is well-organized: you'll find two cozy bedrooms, two modern bathrooms with windows, and a functional closet, ideal for keeping everything tidy. Every space is meticulously designed, ready to make you feel right at home.

Details that make the difference:

- Air conditioning and underfloor heating for maximum comfort in every season
- High-quality fixtures with excellent thermal and acoustic insulation
- Natural light and open views
- Modern finishes and carefully selected materials
- Plus, you have access to an 18m2 garage and a 5m2 cellar, perfect for those seeking extra space and convenience.

Immobiliare Mondo

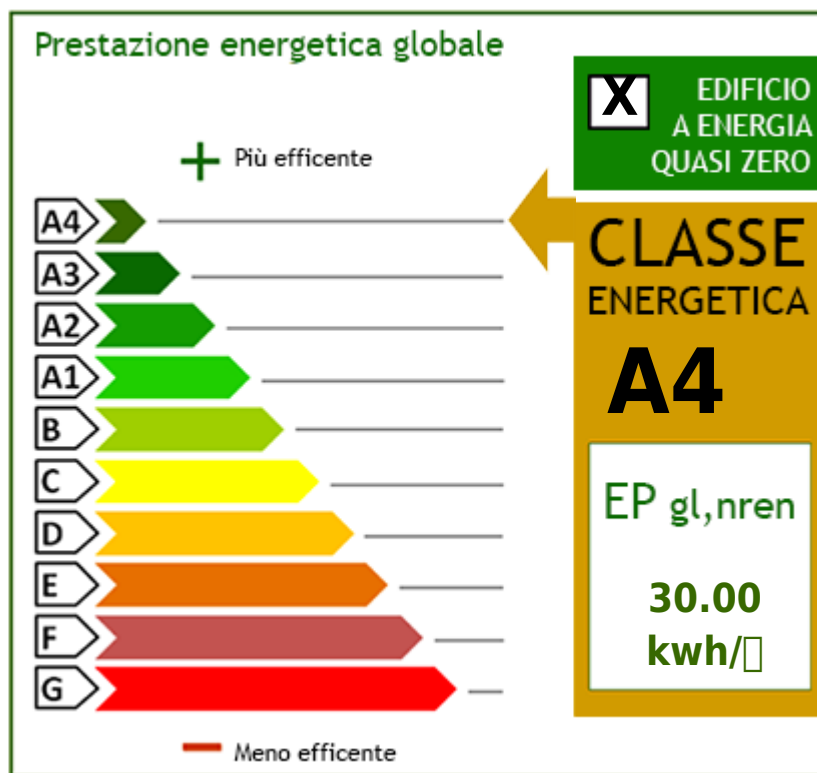
Via del Molinello 3 - Termoli (CB) - Phone number 0875871077
 info@immobiliaremondo.it - <https://www.immobiliaremondo.it/en>
 VAT 01733200701

-The location is ideal: you're in a quiet residential area but close to everything-the supermarket, hospital, municipal park, and the city center, all just a few minutes away.

If you're looking for a modern, efficient, and move-in ready home with a beautiful private garden, this is the right one for you. Contact me; I'll be happy to show you around in person and let you discover every detail of this truly special apartment. Call Raul at 3294363448.

Property Informations

: Viale Padre Pio	: 86039
: 2	: 2
: 3	: Yes
: 2027	



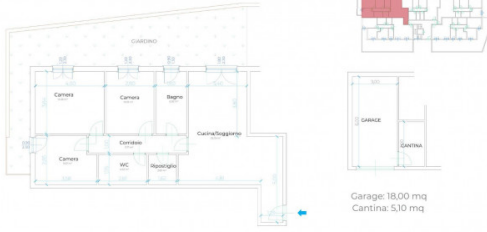
PIANTA PIANO TERRA



PIANTA PIANO TIPO



TIPOLOGIA 1 - PIANO TERRA

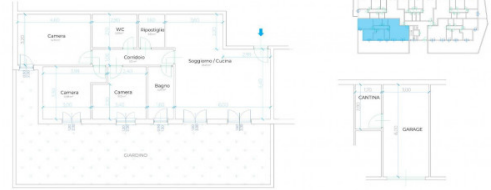


Garage: 18,00 mq
Cantina: 5,10 mq

Mq lordi: 98,42 mq
Mq calpestabili: 86,55 mq
Giardino: 42,48 mq

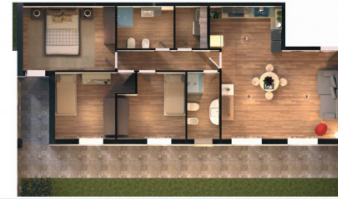


TIPOLOGIA 2 - PIANO TERRA

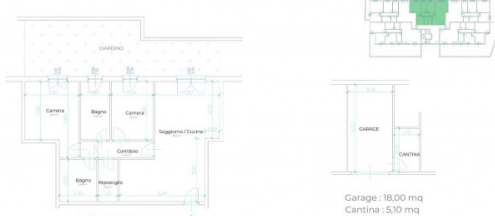


Garage: 18,00 mq
Cantina: 4,93 mq

Mq lordi: 102,06 mq
Mq calpestabili: 89,63 mq
Giardino: 65,61 mq



TIPOLOGIA 3 - PIANO TERRA

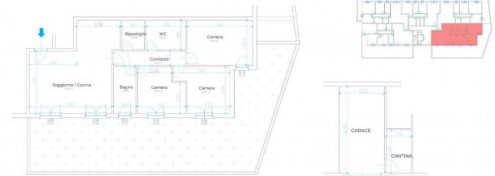


Garage: 18,00 mq
Cantina: 5,10 mq

Mq lordi: 83,22 mq
Mq calpestabili: 73,77 mq
Giardino: 35,36 mq



TIPOLOGIA 4 - PIANO TERRA

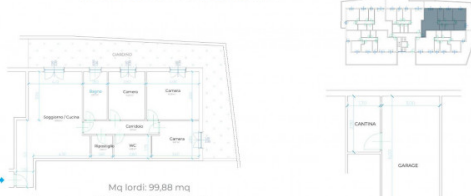


Garage: 18,00 mq
Cantina: 5,10 mq

Mq lordi: 100,04 mq
Mq calpestabili: 87,67 mq
Giardino: 82,47 mq



TIPOLOGIA 5 - PIANO TERRA

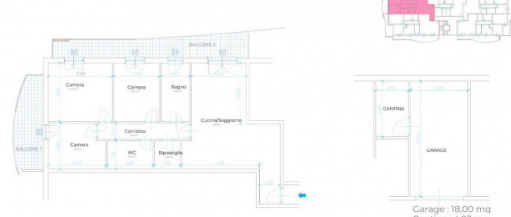


Garage: 18,00 mq
Cantina: 4,93 mq

Mq lordi: 99,88 mq
Mq calpestabili: 87,97 mq
Giardino: 44,70 mq



TIPOLOGIA 6 - PIANO TIPO



Garage: 18,00 mq
Cantina: 4,93 mq

Mq lordi: 98,42 mq
Mq calpestabili: 86,55 mq
Balcone 1: 9,92 mq
Balcone 2: 15,81 mq



Soggiorno / Cucina

TIPOLOGIA 7 - PIANO TIPO

Mq lordi: 102,06 mq
Mq calpestabili: 89,63 mq
Balcone 1: 12,15 mq
Balcone 2: 22,96 mq

Garage: 18,00 mq
Cantina: 5,10 mq

Soggiorno / Cucina

TIPOLOGIA 8 - PIANO TIPO

Mq lordi: 83,22 mq
Mq calpestabili: 73,77 mq
Balcone 1: 23,07 mq

Garage: 18,00 mq
Cantina: 4,93 mq

Soggiorno / Cucina

TIPOLOGIA 9 - PIANO TIPO

Mq lordi: 100,24 mq
Mq calpestabili: 87,87 mq
Balcone 1: 11,53 mq
Balcone 2: 21,68 mq

Garage: 18,00 mq
Cantina: 4,93 mq

Soggiorno / Cucina

TIPOLOGIA 10 - PIANO TIPO

Mq lordi: 99,88 mq
Mq calpestabili: 87,97 mq
Balcone 1: 9,92 mq
Balcone 2: 16,47 mq

Garage: 18,00 mq
Cantina: 5,10 mq

Soggiorno / Cucina